

# Linda Lemon

Blue Caterpillar Art Gallery

18 Sep - 31 Oct 2011



Tel: +27 33 3871356 [www.butterflies.co.za](http://www.butterflies.co.za) [art@butterflies.co.za](mailto:art@butterflies.co.za)

# Linda Lemon

Linda Lemon's pastels and oils mesmerize the viewer with the stunning beauty of the wildlife in the African bushveld. The jaw-stretching innocent yawn of the kitten contrasts with the steely, cunning eyes of the mature leopard. The protruding tusks and jagged creases in the trunk of a bull elephant are scenes from the plains of Africa which are captured in detail by Linda Lemon, a native of Zimbabwe.

Linda is self taught with no formal education in art, but as her youngest daughter has Down's Syndrome her art had to be treated as a business resulting in her becoming an accomplished artist and naturalist. Her love for the African bushveld and its harsh beauty inspired her to experiment further with pastels and oils in order to capture Africa's beauty as she sees it.

The monetary rewards have helped to educate her daughter outside the country due to the lack of specialized facilities in Zimbabwe. Over the years this has proved to be a very big incentive for her work and, together with her dedication to art and her love for life and wildlife, has resulted in her producing remarkable paintings depicting life and wildlife in their natural environment.

Linda's works are highly sought after by private collectors internationally. Some of her international exhibitions include Christie's South Kensington Wildlife Auction UK, Dallas Safari Club, Atlanta Safari Club, Leigh Yawkey Woodsen Museum Birds in Art, Elephant Rose Foundation Holland and Zimbabwe and Australia Cultural Exchange.



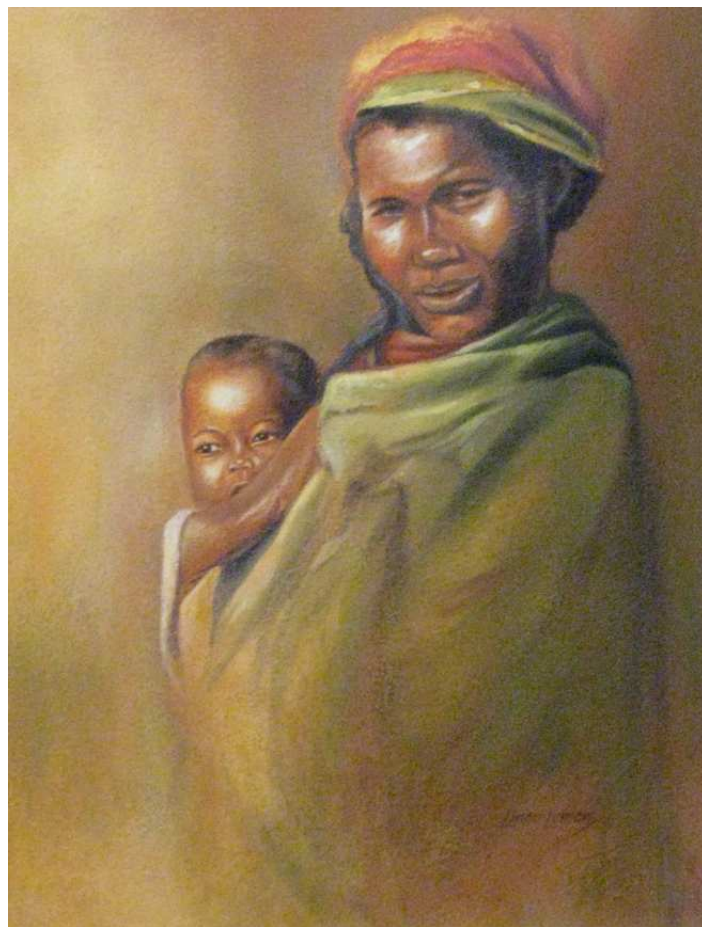
*Masaai Woman and Children*  
Original Oil  
44.5x64.5cm  
R5 150 (US\$735)



*Cheetah Pair*  
Original Oil  
90x60cm  
Frame size 127x97cm  
R15 500 (US\$2 215)



*Lone Wild Dog*  
Original Oil  
45x60cm  
R5 150 (US\$735)



*African Woman and Child*  
Original Oil  
43x33cm (Frame size 63x53cm)  
R5 950 (US\$850)



*After the Rain*  
Original Oil  
90x49cm  
R6 850 (US\$980)



*Zebra Pair* (Original Oil)  
74x44cm  
R5 450 (US\$780)



*African Portrait 'Old Man'* (Original Oil)  
44x32cm  
R5 450 (US\$780)

## Giclee Prints

Giclee prints are printed individually, one on one basis, rather than the mass production method used for most reproductive prints today. Because no plates or screens are used a Giclee Print will have a higher resolution and more dramatic colour range. Giclee printing is used by the Louve in Paris to display works that cannot be allowed out of museum cellars and otherwise would never be seen by the public. All of the prints in this catalogue are printed onto canvas.



*Forever Vigilant*  
Giclee Print  
61x45cm  
Frame size 78x63cm  
R2 650 (US\$380)



*Immanent Charge*  
Giclee Print  
50x40cm  
R1 250 (US\$180)



*Big Five*  
Giclee Print  
64x47cm  
R1 250 (US\$180)



*Guinea Fowl*  
Giclee Print  
38x73cm  
R1 150 (US\$165)



*Leopard's Lookout*  
Giclee Print  
20x25cm  
R450 (US\$65)



*Acacia Comfort*  
Giclee Print  
60x91cm  
R2150 (US\$305)



*Zebra Maze* Giclee Print  
40x50cm R800 (US\$115)



*Lion Port* Giclee Print  
20x25cm R450 (US\$65)